



# INSIGHT VACATIONS

*The Art of Touring in Style*

## THE CHELSEA FLOWER SHOW COLLECTION

A selection of tours featuring  
The Chelsea Flower Show departing May 2018

### INCLUDED 5 STAR SERVICES ON ALL CHELSEA FLOWER SHOW DEPARTURES

- Accommodation in premium accommodation in the best locations
- Escorted by an expert Tour Director throughout
- Business class legroom onboard your 40 seater luxury air conditioned coach\*
- Included airport transfer service on first and last day of tour
- Hotel and restaurant tips included
- Concierge service and luggage handling
- Insight Traveller document wallet and information pack



#### PASSENGER CONDITIONS:

**TIPS & TAXES & PORTERAGE:** Insight hotels include all service charges, taxes and porterage. All tips are included for services on tour provided by dining-room waiters, chambermaids and porters at hotels.

**WHAT'S NOT INCLUDED:** Airfares, airport taxes and charges imposed by third parties, passports and applicable visa fees, laundry, phone calls, items of a personal nature, beverages, meals and sightseeing not detailed on the itinerary, tips and gratuities to the Tour Director, coach drivers and local city guides, excess baggage, optional experiences and travel insurance. Please note that travel insurance is highly recommended. Please see your Travel Agent for further details.

**DEPOSIT:** A deposit of NZD\$200 per person is required within 7 days of booking.

**FINAL PAYMENT:** Required to your travel agent no later than 70 days prior to departure.

**PRICE:** The advertised price is in New Zealand dollars. No surcharges in regards to cost or currency fluctuations will be made once deposit is received. This guarantee excludes fuel surcharges and does not apply to any taxes, charges or levies imposed by any government or its agencies. No discounts are applicable with this tour.

**DISCOUNTS:** Frequent Traveller & 2nd Tour Discount apply only. No other discounts are available on this tour. Refer our 2017/2018 brochure for conditions of these.

**CANCELLATION FEES:** The following scale of charges apply when cancellation is notified: No of days prior to tour commencement. Cancellation fee a % of total tour price:

More than 70 days loss of deposit

Between 69 & 30 days 38.5%

Between 29 & 8 days 55%

Between 7 days to departure 100% of fare

**AMENDMENTS:** A fee of NZD\$50 may apply to any change made to your booking once confirmed.

**REFUNDS:** No refund is available if cancellations occur after the tour has commenced or in respect of any tours, accommodation, meals or any other services not utilised.

**ITINERARY CHANGES & TOUR CANCELLATION:** Insight Vacations reserves the right to vary itineraries should circumstances dictate, as well as cancel or reschedule any tour departure in accordance with operating requirements, or circumstances beyond its control. The advertised tours require minimum numbers to depart. Should these not be met Insight Vacations reserves the right to alter or cancel arrangements.

**HOTELS:** The hotels listed in the itinerary are confirmed, although subject to change for reasons beyond our control.

**ROOMING ARRANGEMENTS:** Please note that single accommodation is usually limited. Occupying a single room either by choice or circumstance is subject to the applicable supplement.

**TOUR MEMBERSHIP:** Any person aged 8 years or more is eligible, though if under 18 years of age must be accompanied by an adult. The Tour Director may, at his or her discretion, require any person to withdraw from any tour if he or she deems the person's acts or conduct offensive or a nuisance to other passengers, and we shall have no further liability.

**PORTERAGE:** For one suitcase on tour is included in the tour price and at arrival or departure from each tour hotel. Due to limited coach capacity this single bag should have a weight not exceeding 30kg (66lbs) and dimensions not exceeding 77.5cm (30.5in) x 56cm (22in) x 32cm (12.5in). Charges will be levied in the event these limits are exceeded and our promise to transport you as indicated may be invalidated. Note: Airlines may restrict check-in baggage to 20kg per person.

**DOCUMENTATION:** Approximately 2 weeks prior to departure from New Zealand, documentation will be received by your travel agent including a tour itinerary, a full Hotel list, an Optional Experiences list, baggage labels & ticket wallet.

**HOLIDAYS & CHANGES:** During local or national holidays abroad, certain facilities such as museums, sightseeing tours and shopping may be limited. In such instances, and whenever possible, slight itinerary adjustments are made by Insight Vacations to minimise inconvenience to our passengers. If, however you feel your enjoyment might be diminished by such minor limitations please check with the respective national tourist office before selecting a specific departure. Similarly, holidays, closing days and other circumstances may necessitate a change of the day of the week for scheduled highlight dinners, sightseeing or other activities. Due to the unreliability of domestic air scheduling, religious festivals, and other unforeseen circumstances, the itineraries, hotels or order of sightseeing may change at short notice. Pre or post tour accommodation is subject to availability. If not available, an alternative may be offered.

**BOOKING TERMS AND CONDITIONS:** These conditions incorporate the basis upon which bookings are accepted by your Travel Agent and Insight Vacations. By making a booking you are agreeing to these terms & conditions. Insight is not responsible for the costs of any other travel arrangements affected due to our cancellations or re-scheduling of any tour departure. For further information about Insight Vacations please refer to Insight's brochure. These conditions must be carefully studied prior to making the commitment of paying the deposit as they must be referred to.

Additional terms and conditions may be applicable to group bookings and will be advised.

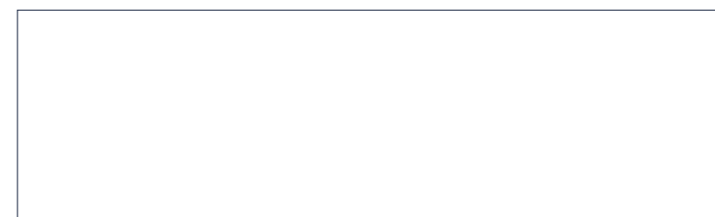
\*Local coaches may be used in London and for transfers and may not be 40 seater coaches.



#### FOR SPECIALIST ASSISTANCE

CALL 0800 568 769

OR SEE YOUR TRAVEL AGENT







Lake Maggiore

# Chelsea Flower Show & Springtime in the Alps

Amsterdam – London | 18 Days, Departing 8 May 2018

Also featuring Keukenhof Gardens

## DAY 1: TUE 8 MAY 2018

### Arrive Amsterdam

Welcome to Amsterdam! On arrival, complimentary transfers are provided to your tour hotel, departing the airport at 09.00, 11.30 and 14.30. Later, meet your Tour Director for a Welcome Drink and Highlight Dinner at a local restaurant. (HD)

Hotel: *Grand Hotel Amrath Amsterdam – 2 nights*

## DAY 2: WED 9 MAY 2018

### Keukenhof, Amsterdam Sightseeing

First, an orientation of the city, see the Mint Tower, the floating flower market and the Royal Palace in Dams Square. Then it's off to Keukenhof Gardens to view this amazing spectacle. After plenty of time to meander through the fields of flowers return to Amsterdam. (B)

## DAY 3: THU 10 MAY 2018

### Amsterdam – Maastricht

For those early risers join our trip to Aalsmeer Flower Auction. The size is so tremendous that it will overwhelm the eyes and the senses as millions of brilliant flowers are sold worldwide. Later head to the pretty town of Maastricht on the Dutch/Belgian border. Enjoy a guided tour of this city, where the European Union was created in 1993. This evening is at your leisure. (B)

Hotel: *Crowne Plaza Maastricht*

## DAY 4: FRI 11 MAY 2018

### Maastricht – Rothenburg

This morning travel to Rothenburg, the most well preserved town on part of the "Romantic Road". On our orientation tour, we plunge into the 16th century, walking through the narrow cobbled streets lined with high gabled houses to the market square dominated by its Renaissance town hall. Dinner tonight is in an old town restaurant. (B,HD)

Hotel: *Hotel Altes Brauhaus*

## DAY 5: SAT 12 MAY 2018

### Rothenburg – Munich

Continue on the "Romantic Road", meandering through river valleys and rolling countryside. Before heading for the Bavarian capital of Munich. On arrival your orientation tour shows the Olympic Stadium, University, Victory Arch and the Marienplatz. (B,D)

Hotel: *The Westin Grand Hotel – 2 nights*

## DAY 6: SUN 13 MAY 2018

### Neuschwanstein Excursion

Enjoy the scenery as you travel into the heart of Bavaria to the fairytale castle of Neuschwanstein, perched on a spectacular Alpine mountainside. This was King Ludwig II's favourite castle. Visit the exuberantly decorated apartments, including the Throne Room before returning to Munich via the Alpine Road. (B)

## DAY 7: MON 14 MAY 2018

### Munich – The Dolomites

Travel to Innsbruck in Austria, set in a valley surrounded by snow-capped mountains. See the lovely Golden Roof of the Emperor Maximilian and the Royal Palace. Continue through the Italian Alps and some of the most spectacular scenery Europe has to offer before arriving in the stunning town of Bolzano. (B,D)

Hotel: *Parkhotel Laurin*

## DAY 8: TUE 15 MAY 2018

### The Dolomites – Italian Lakes

Descending the Dolomites, drive to the walled medieval town of Soave, a middle age wine village situated in the region of Veneto in Italy at the foot of an impressive castle. On an orientation tour of the town, see the churches and palaces of different architectures, like the Palazzo di Giustizia, the 14th century law court and the residence of the Captains of Serenissima. Continue through picturesque scenery to the much loved Italian Lakes District, where we head to our lakeside hotel for our two night stay. (B,D)

Hotel: *Grand Hotel Dino – 2 nights*

## DAY 9: WED 16 MAY 2018

### Italian Lakes

The Italian Lakes District, a favourite haunt for artists and travellers. A full day set aside to relax and enjoy. Take a cruise to Isola Bella, the largest and most famous island, renowned for its incredible palace and

stunning Botanical Gardens. There is a guided tour of this privately owned palace with free time to admire the gardens. (B)

## DAY 10: THU 17 MAY 2018

### Italian Lakes – Swiss Alps

Travel across the border into Switzerland and ascend the Swiss Alps where we stay for the next two nights. (B)

Hotel: *Romantik Hotel Schweizerhof – 2 nights*

## DAY 11: FRI 18 MAY 2018

### Swiss Alps

Marvel at the dramatic glacial views as you travel along Grindelwald Valley, and follow the sparkling Lutschine River to Lauterbrunnen at the head of the "Valley of Waterfalls". See the Staubbach Falls plunge 300 metres. Perhaps take a cog-wheel train ride to the summit of the Jungfrau Mountain? (B)

## DAY 12: SAT 19 MAY 2018

### Swiss Alps – Dijon

Visit Chillon Castle today, set on a rocky inlet, immortalised by Byron's "Prisoner of Chillon". Later travel to Montreux for a lunch stop before continuing to Burgundy and to historic Dijon. Enjoy a walking tour through the medieval streets where you are sure to appreciate the wealth and elegance of the city's architectural heritage. (B,D)

Hotel: *Grand Hotel La Cloche*

## DAY 13: SUN 20 MAY 2018

### Dijon – Paris

Travel through the countryside before arriving at the Château de Versailles, one of the most beautiful achievements of 18th century French art. Visit the Château and the extensive gardens which in Louis XIV's view were just as important as the Château itself. In glittering Paris tonight, perhaps see one of the world famous cabaret shows for an evening of glamour? (B)

Hotel: *Crowne Plaza Hotel Paris Republic – 2 nights*

## DAY 14: MON 21 MAY 2018

### Paris & Monet's Garden

Travel first to Giverny to visit the charming house and gardens of the former home of the greatest impressionist painter, Claude Monet, and inspiration

for his famous water lily paintings. Return to Paris where this afternoon is at leisure. This evening, a highlight dinner in true French style, up the Eiffel Tower. (B,HD)

## DAY 15: TUE 22 MAY 2018

### Paris – Tunbridge Wells

After crossing the channel this morning from Calais, continue to Sissinghurst, one of the best known and admired gardens in the world. Explore the amazing series of garden spaces and climb the tower for a fabulous view. Then to your luxury spa hotel in the picturesque Kent countryside. (B,D)

Hotel: *The Spa Hotel*

## DAY 16: WED 23 MAY 2018

### Royal Tunbridge Wells – London

Garden Wisley was gifted to the Royal Horticultural Society in 1903 and since then it has evolved into a world class garden. Explore the beautiful Bowes-Lyon Rose Garden, picturesque orchard and the huge cathedral like glass house. Continue to London, the rest of the day and evening is at your leisure. (B)

Hotel: *Amba Marble Arch – 2 nights*

## DAY 17: THU 24 MAY 2018

### Chelsea Flower Show

A transfer in the morning takes you to the famous Chelsea Flower Show! The Chelsea Flower Show will bring together the very best show gardens, flowers and gardening from around the world. You will be able to see magnificent floral displays and model gardens plus extensive displays of show gardens, courtyard gardens, city and roof gardens with areas to learn about plants and growing flowers. This afternoon a transfer back to your hotel is provided. This evening we dine on a spectacular Thames River Dinner Cruise, a perfect way to complete our memorable holiday! (B,HD)

## DAY 18: FRI 25 MAY 2018

### Farewell London

After breakfast bid your Tour Director farewell and transfer to the airport to meet your ongoing flight. (B)

*Insight Vacations reserves the right to alter from the tour itinerary and hotels should circumstance dictate.*



## INCLUDED SIGNATURE EXPERIENCES

PREMIUM HIGHLIGHTS FEATURE HOTELS



### TOP RATED HIGHLIGHTS

- Explore the famous Chelsea Flower Show
- Visit the renowned gardens at Keukenhof
- Visit Monets Gardens, Sissinghurst and Wisley Gardens
- Explore Versailles Châteaux and gardens
- Cruise to Isola Bella and visit Borromeo Palace & Garden
- Visit Neuschwanstein Castle
- Highlight dinner up the sparkling Eiffel Tower
- Thames River Dinner Cruise
- Parkhotel Laurin Bolzano
- Grand Hotel La Cloche Dijon

### INCLUDED QUALITY DINING

17 Breakfasts, 5 Hotel Dinners, 4 Highlight Dinners

### TOUR PRICE

# \$6,945

per person twin share

**\$2,425** per person single supplement



Amsterdam





Cotswold cottages

Also featuring  
RHS Chatsworth  
Flower Show

# The Gardens of England & Wales

With The Chelsea Flower Show | 15 Days, Departing 25 May 2018

**DAY 1: FRI 25 MAY 2018**  
**Arrive London**

Welcome to London! On arrival you are transferred to your tour hotel. This evening, join your Tour Director for a Welcome Drink and tour debriefing at your hotel.  
*Hotel: Amba Marble Arch – 4 nights*

**DAY 2: SAT 26 MAY 2018**  
**Chelsea Flower Show**

A transfer in the morning takes you to the famous RHS Chelsea Flower Show! Enjoy the extensive displays of show gardens and magnificent floral displays before a transfer in the afternoon back to your hotel. Later, enjoy a glass of champagne and a bird's eye view of London from the London Eye before dinner at a local restaurant. (B,HD)

**DAY 3: SUN 27 MAY 2018**  
**London Sightseeing**

On your guided sightseeing tour this morning see Big Ben and the Houses of Parliament, St Paul's Cathedral, Westminster Abbey and Trafalgar Square. Witness the pomp and pageantry of the Changing of the Guard at Buckingham Palace (if operating) before enjoying lunch in a typical English pub. This afternoon you are free to enjoy London at your own pace. (B,HL)

**DAY 4: MON 28 MAY 2018**  
**Kew Gardens & Hampton Court Palace**

This morning visit the famous Royal Botanical Gardens at Kew. Explore inside the vast Victorian glasshouses and see the indoor galleries. This afternoon, discover the wonders of majestic Hampton Court Palace, home to the Kings and Queens of Britain since the time of

Henry VIII. Discover the magnificent State Apartments, explore the riverside gardens. (B)

**DAY 5: TUE 29 MAY 2018**  
**London – Wisley Gardens – St Austell**

Travel to the gardens of Wisley today, renowned as the flagship garden of the Royal Agricultural Society. There's ample time to take in the many highlights before continuing to the Cornish Riviera and our hotel, perched high on the rugged cliffs of St Austell Bay. (B,D)  
*Hotel: The Carlyon Bay Hotel – 2 nights*

**DAY 6: WED 30 MAY 2018**  
**Lost Garden of Heligan & the Cornish Coast**

Unveiled in 1992 from under decades of overgrowth, the Lost Gardens were hailed by The Times as "the

garden restoration of the century". Today the mysterious gardens and estate offer over 200 acres for exploration! This afternoon visit the rugged Cornish coast. Stop for a photo of St Michael's Mount near Penzance and continue to Land's End, the most westerly point on the British mainland. (B,D)

**DAY 7: THU 31 MAY 2018**  
**St Austell – Cheltenham**

This morning visit the picturesque fishing village of Clovelly with its cobbled streets and white washed cottages. Next we visit Hidcote Manor Gardens, one of the greatest arts and crafts gardens in England. Then continue through the English countryside to the town of Cheltenham for a two night stay. (B,D)  
*Hotel: Queens Hotel Cheltenham – 2 nights*

**DAY 8: FRI 01 JUN 2018**  
**Cotswolds Excursion**

A full day tour of the Cotswolds begins in Burford, where there's time to visit the small tea houses before heading south to Bibury described as the 'prettiest village in Britain' for an included lunch. Later we return to Cheltenham. (B,HL)

**DAY 9: SAT 02 JUN 2018**  
**Cheltenham – Powis Castle – Llandudno**

Today travel to Wales and visit Powis Castle gardens with its spectacular terraces and stunning vistas. Continue to the seaside resort town of Llandudno. (B,D)  
*Hotel: St George's Hotel – 2 nights*

**DAY 10: SUN 03 JUN 2018**  
**Bodnant Garden Excursion**

The day starts with a visit to Bodnant Gardens, one of the most beautiful gardens in the UK. Later visit the village of Llanberis at the foot of Snowdon, Yr Wyddfa, at 3,560 feet the highest peak in Wales including a fabulous trip onboard the Snowdon Mountain Railway. (B)

**DAY 11: MON 04 JUN 2018**  
**Llandudno – Lake District**

Farewell Wales and continue north to the English Lake District where you see some of the most beautiful countryside in the world. Admire the Topiary Gardens, the finest, oldest and most extensive garden in the

world at Levens Hall. Then continue to our traditional hotel set on the shores of Lake Windermere. (B,D)  
*Hotel: Lakeside Hotel & Spa – 2 nights*

**DAY 12: TUE 05 JUN 2018**  
**Lake District Experience**

Devote the day to a scenic wonderland of rugged mountains and tranquil waters - an inspiration to a host of English poets. Begin with a visit to Wordsworth's grave in the small churchyard at Grasmere before embarking on a relaxing cruise. The remainder of the day is free to relax. (B)

**DAY 13: WED 06 JUN 2018**  
**Lake District – Chatsworth RHS Flower Show – Nottingham**

Head into the rolling Derbyshire countryside, where the Chatsworth Estate offers a glorious backdrop for the RHS Chatsworth Flower Show. This shows programme, will offer a brand new celebration of plants and gardens. You can expect to see all your favourite RHS Show features, including a fantastic range of specialist nurseries, outdoor lifestyle shopping and garden inspiration at every turn! Later continue to the historic city of Nottingham. (B)  
*Hotel: Mercure City Centre*

**DAY 14: THU 07 JUN 2018**  
**Nottingham – Blenheim Palace – Bampton Village – London**

This morning tour the magnificent house and gardens of Blenheim Palace, home of the Duke of Marlborough and the birthplace of Sir Winston Churchill. Continue to the village of Bampton to see the street where many scenes from the "Downtown Abbey" TV series were filmed. Later, return to London for a spectacular Thames River Dinner Cruise! (B,HD)  
*Hotel: Amba Marble Arch*

**DAY 15: FRI 08 JUN 2018**  
**Farewell London**

After breakfast your tour comes to an end with a transfer to London Heathrow Airport for your onward flight. (B)

*Insight Vacations reserves the right to alter from the tour itinerary and hotels should circumstance dictate.*



**INCLUDED SIGNATURE EXPERIENCES**

PREMIUM HIGHLIGHTS FEATURE HOTELS

**TOP RATED HIGHLIGHTS**

- Explore the famous Chelsea Flower Show
- London – Thames River Dinner Cruise
- London Eye excursion with champagne
- Visit the Royal Botanical Gardens at Kew
- Discover the wonders of Hampton Court Palace
- Visit the Gardens of Wisley and the Lost Garden of Heligan
- Bodnant Gardens excursion, Wales
- Snowden Mountain Railway Excursion
- Cruise Lake Windermere
- Visit Blenheim Palace
- Explore the RHS Chatsworth Flower Show
- The Carlyon Bay Hotel St Austell
- St George's Hotel Llandudno

**INCLUDED QUALITY DINING**

- 14 Breakfasts, 5 Hotel Dinners, 2 Highlight Lunches, 2 Highlight Dinners

**TOUR PRICE**

**\$6,885**

per person twin share

**\$2,270** per person single supplement



Chelsea Flower Show





Chenonceau Castle

# European Affair

With The Chelsea Flower Show | London - Paris | 9 Days, Departing 25 May 2018

**DAY 1: FRI 25 MAY 2018**  
**Arrive London**  
 Welcome to London! On arrival you are transferred to your hotel where the rest of the day is at leisure to relax or explore London. This evening join your Tour Director for a Welcome Drink and tour debriefing at the hotel.  
*Hotel: Amba Marble Arch – 2 nights*

**DAY 2: SAT 26 MAY 2018**  
**Chelsea Flower Show**  
 Enjoy a full day to experience the famous Chelsea Flower Show – the 'mecca' of all garden shows. A transfer in the morning takes you to the famous show! The Chelsea Flower Show will bring together

the very best show gardens, flowers and gardening from around the world. You will see magnificent floral displays, model gardens, English garden tools and a host of garden structures and artifacts. This afternoon a transfer back to your hotel is provided. This evening we dine on a spectacular Thames River Dinner Cruise. (B,HD)

**DAY 3: SUN 27 MAY 2018**  
**London – Amsterdam**  
 Cross to Dover for the channel crossing to Calais, and transfer to Amsterdam. On the way enjoy an orientation tour past the Mint Tower; floating Flower Market and Royal Palace in Dam Square. (B,D)  
*Hotel: Hampshire Eden Hotel – 2 nights*

**DAY 4: MON 28 MAY 2018**  
**Amsterdam**  
 Start your day at the famous Aalsmeer Flower Auction, the world's largest flower auction, where you experience the bustle of the auction floor, and witness the incredible number of flowers sold every day. Later visit a typical Dutch windmill and the picturesque village of Volendam. Volendam is renowned for its wooden houses, traditional fishing boats and old harbour. (B)

**DAY 5: TUE 29 MAY 2018**  
**Amsterdam – Bruges**  
 Continue to medieval Bruges in Belgium. Stroll along the cobbled streets lined with high gabled houses



Chelsea Flower Show

from the Golden Age of the 16th century. Visit the market square dominated by the 272ft Belfry of the Market Hall. Then explore Burg Square with its ornate Gothic town hall and glorious frescoes on the walls of the Holy Blood Chapel. Afterwards enjoy a relaxing canal cruise before dinner at a local restaurant. (B,HD)  
*Hotel: Hotel De Tuilerieen*

**DAY 6: WED 30 MAY 2018**  
**Bruges – Paris**  
 Depart Bruges for glittering Paris. Sightseeing with a Local Expert takes you by the Île de la Cité to see Notre Dame Cathedral with its famous tale of Quasimodo. Then around the imposing facades of the Louvre and Garnier's Opera House. See the obelisk in the Place de la Concorde and drive along the Champs Elysees to the Arc de Triomphe. Next, survey the city from the heights of the Eiffel Tower, built for the World's Exhibition of 1889. The

rest of the day is free to enjoy at your leisure. You could stop at the sidewalk cafés lining the Seine for pastries, view the priceless masterpieces at the Louvre, or hit the designer shops. (B)  
*Hotel: Le Belmont Hotel – 3 nights*

**DAY 7: THU 31 MAY 2018**  
**Loire Valley Excursion**  
 Take a day tour from Paris to visit two of the most famous Châteaux of the Loire Valley: beautiful Chenonceau Castle, and, perhaps most magnificent of them all, the Château de Chambord. You'll witness the glamour and grandeur of French royalty and aristocracy, and gain insights into "castle life" in these Renaissance riverside castles. (B)

**DAY 8: FRI 01 JUN 2018**  
**Versailles and Giverny**  
 Taking in two of Europe's most celebrated gardens; we have a full day to explore Versailles and Giverny.

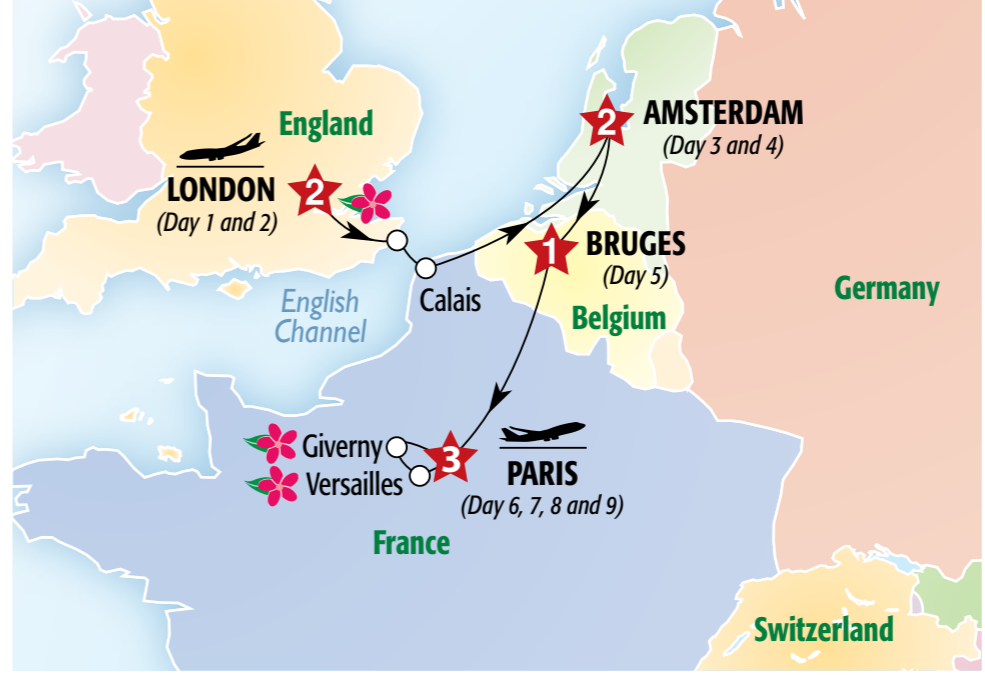
**INCLUDED SIGNATURE EXPERIENCES**  
 PREMIUM HIGHLIGHTS FEATURE HOTELS  
 ★

- TOP RATED HIGHLIGHTS**
- 📍 Explore the famous Chelsea Flower Show
  - 📍 London – Thames River Dinner Cruise
  - 📍 Locally guided tour of Paris and the Loire Valley
  - 📍 Orientation tours in Amsterdam and Bruges
  - 📍 Visit the famous Aalsmeer Flower Auction
  - 📍 Visit a typical Dutch windmill & village of Volendam
  - 📍 Enjoy a relaxing canal cruise in Bruges
  - 📍 Visit two famous Châteaux of the Loire Valley
  - 📍 Explore Versailles and Giverny
  - ★ Hotel De Tuilerieen Bruges

**INCLUDED QUALITY DINING**  
 📍 8 Buffet Breakfasts, 1 Dinner, 2 Highlight Dinners

France's royal history is revealed at King Louis XIV's majestic palace of Versailles which, along with its magnificent garden, became the quintessential model for palaces in Europe. Visiting the luxurious Grand Apartments, the chandelier-lit Hall of Mirrors and the Chapel of Versailles, you get a glimpse into the lives of 17th century French nobility. Then we head to Giverny to view the gardens that inspired many of Impressionist Claude Monet's most famous masterpieces, seeing the Japanese Bridge which crosses the illustrious water-lily pond – as painted in Monet's magnum opus 'Nymphs'. Back in Paris, the rest of the day is at leisure. (B)

**DAY 9: SAT 02 JUN 2018**  
**Farewell Paris**  
 Your memorable journey comes to an end as you bid your Tour Director farewell. Transfers arrive at Charles De Gaulle Airport today at 08:30, 11:30 & 18:00. (B)



**TOUR PRICE**  
**\$4,125**  
 per person twin share  
 \$1,659 per person single supplement

**MEAL KEY:** (B) = Breakfast, (HL) = Highlight Lunch, (D) = Hotel Dinner, (HD) = Highlight Dinner.

*Insight Vacations reserves the right to alter from the tour itinerary and hotels should circumstance dictate.*